

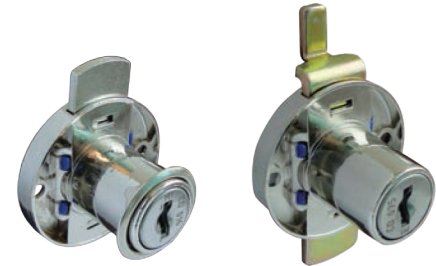
MULTI PURPOSE LOCK - ROUND

Special Features

- For single drawers with options of common keys for sets of drawers.
- Also available in sets of 2, 3, 4, 6, 12 and 48 with common key.
- Also available with brass ring.
- Round multi purpose lock having a CRANKED BOLT specially designed for overlay shutters or drawers with overlay facias.

Specifications

Item	Code Nos.	Finish
Multi Purpose Lock - Round Straight	MPL1-22	NP
Multi Purpose Lock - Round Straight (set of 12 nos.)	MPL1-22-S12	NP
Multi Purpose Lock - Round Cranked	MPL1C-22	NP
Multi Purpose Lock - Round Straight with metal key	MPL1-22M	NP

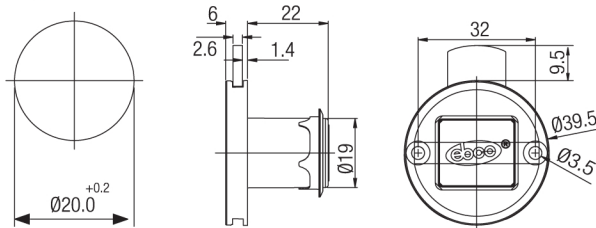


Straight

Cranked



Straight



Cranked

